



OBT established 1903

# *PureLand Path*

*The Oregon Buddhist Temple Monthly Newsletter*

*July 2012*



## *Enjoying our lives and appreciating our family and friends*

*Reverend Jundo Gregory Gibbs*

This will reach you in the midst of summer. I hope that you are enjoying the weather and have time to spend with your family and friends. The older I get, the more fully I realize that family and friends bring the greatest fulfillment into my life.

As always, I am writing this ten days to two weeks before you will read this. I am assuming you are experiencing warm and pleasant conditions. My wife and boys will be going to Japan for several weeks on the 9<sup>th</sup> of this month. I always intend to increase my exercise regimen when they are out of the country. Sometimes I do. What I always do when they are gone is to watch movies and TV. series on DVD. Last year I watched multiple seasons of Dexter and Breaking Bad, guilty pleasures for a Buddhist priest. Perhaps I can watch the most recent seasons of those shows this month on DVD.

Our lives are filled with responsibilities, aspirations, needs, problems, so it is a wonder we find any time for the simple enjoyments. I hope you are finding time to be with those you truly care about this summer. The last Sunday of this month will be our combined Obon and Hatsubon service.

On July 29<sup>th</sup> at 9:30 am I will give a Japanese-language message in a brief service. Our main service will begin at 10 am. I will have a name card for each temple member who has passed away in the past year on the naijin with a candle showing our respect. This is an important service, in some ways our most important service each year.

If you are observing Hatsubon, first obon season since the passing of a loved one, your loss is still fresh in your mind. Although you may be coming to terms with the loss better than you were around the time of the 49<sup>th</sup> day service, it is still a sad and painful matter. Doesn't it help to be in the chapel/hondo with a dozen or so other families who are also still hurting from the loss of someone dear? Separation from

those we treasure by death is the most universal and inevitable of human experiences. Come join us this July 29<sup>th</sup>, especially if you've lost someone since the last Obon season.

I hope those of you who are attending our introductory courses on Buddhism are enjoying the classes. We have four sessions this month. On July 1<sup>st</sup> we will have our last session on "Introduction to General Buddhism". July 8<sup>th</sup> will begin a three week-long run of courses on "Introduction to Jodo Shinshu". We believe these courses will be of interest even to the long-time temple members. They will be basic enough, however, to be comprehensible by those new to Buddhist tradition. We are asking \$5 donation per class but this fee will be waived for anyone requesting a scholarship.

Leading up to our Obon festival on 8-4 we will have classes on Obon dancing. Lady Sahomi Tachibana and other senior teachers from our Sangha will help us become comfortable with these simple Japanese folk dances. Those sessions will begin at 7 pm and be offered on 7-17, 7-19, 7-24, 7-26, and 7-31. The last of these classes will be next month on August 2<sup>nd</sup>. At our Obonfest on August 4<sup>th</sup> we hope you will join in the dancing. If you have any reluctance, just gaze over at me and you are bound to think, "Now I couldn't look nearly as clumsy and silly as he does, - what the heck?"

Whether you can join us for our Obon service this month or our Obon festival next month or not, I hope you are having a wonderful summer. Thank you for taking the time to read this article.

Gassho, Reverend Gibbs

*"The purpose of the Oregon Buddhist Temple is to insure that the Jodo Shinshu Sangha have the facilities, resident minister and other resources they need to share the BuddhaDharma in their daily lives and during their major life events."*

Oregon Buddhist Temple    3720 SE 34th Avenue    Portland, OR 97202-3037    503-234-9456  
503-231-1551 (fax)    e-mail: [oregonbuddhisttemple@yahoo.com](mailto:oregonbuddhisttemple@yahoo.com)    website: <http://www.oregonbuddhisttemple.com>  
This monthly newsletter is published by the Oregon Buddhist Temple, a Buddhist Churches of America temple affiliated with Jodo Shinshu Hongwanji-Ha. Please contact the temple with any comments, questions or concerns, or if you wish to report a change of address. Send news items to the editors: Shinya Ichikawa, [sjichi@gmail.com](mailto:sjichi@gmail.com)

## ***Hatsubon Families - first obon since the passing of a loved one***

<b><i>Family of</i></b>	<b><i>Day of passing</i></b>
1. Hisako Kakishita	09-04-2011
2. Yoshi (Yosh) Hasuike	09-25-2011
3. Shiro Takeuchi	11-22-2011
4. Melvin Takeuchi	12-03-2011
5. Douglas William Anderson	12-04-2011
6. James Joichi Takashima	01-06-2012
7. Shizuko Ouchida	01-25-2012
8. Bessie Shinobu Morita	02-04-2012
9. Leke Susumu Nakashimada	03-30-2012
10. Richard Mitsuru Furukawa	04-22-2012
11. Merrie Yoshie Shiramizu Greenwood	04-25-2012
12. Yoshiko Yasutome	05-27-2012

### July Highlights

Jul 6, 7	DS Rummage Sale	7 am
Jul 13	OBT Board Meeting	7 pm
Jul 17, 19, 24, 26, 31, Aug 2	Obon Dance Practice	7 pm
Jul 21	OBWA Meeting	9:30 am
Jul 21	Natsumatsuri	12 noon - 8 pm
Jul 28	Obon Cemetery Services	
	Rose City	9 am
	Gresham	10:30 am
	OBT	12 noon
Jul 29	Obon Japanese Service	9:30 am
	Hatsubon/Obon English Service	10 am
Aug 4	Obonfest	3 - 9 pm



### ***President's message***

***Yoshi Ono, OBT president***

It's finally feeling like summer is truly here and with it comes anticipation of outdoor festivals. We are once again participating in

Uwajimaya's Natsu Matsuri on July 21, at Sake One's Pacific Rim Festival on August 25, and of course, our own Obon festival on August 4. Lots of preparation work and planning is going on and if you have not been contacted yet but know that you want to get involved in a specific role, please contact me (yoshi.ono@gmail.com), Elaine Yuzuriha (e.yuzuriha@gmail.com), or June Shiigi (volunteer coordinator: shiigisj@comcast.net). We still have a few key positions to fill and we have the most difficulty with overnight security on Friday and Saturday night, which

involves sitting in your car in the parking lot.

Another event we are involved in is the Out of the Shadows: Remembering Hiroshima and Nagasaki, our 2012 commemoration of the nuclear bombings of these two Japanese cities in August of 1945. This takes place Monday, August 6th, 2012 beginning at 6PM at the Japanese American Historical Plaza (Portland Waterfront at NW Naito Parkway & Couch Street). Anyone who visits the Peace Memorial Park in Hiroshima would be moved by the realization of the potential destruction we are capable of. As my mother was a witness to the first bomb as a young teenager, the memories stay vivid.

As for our Fall Bazaar (Sukiyaki Bazaar in the past), we are still undecided about how to reduce the work load on everyone while delivering delicious dishes and having the environment of meeting and talking with others in our community. We are still in search of a chair so if you have ideas and want to help bring them to fruition, please contact me since decisions will have to be made soon.

In Gassho,  
Yoshi Ono



### ***OBWA news***

***Jayne Ichikawa***

OBWA has been energized with summer activities. In June OBWA hosted a summer birthday lunch at Thien Hong. There were 28 members/friends who enjoyed the delicious seven course meal and birthday cake. It was a great opportunity to socialize with friends. Thank you, Kyoko Gibbs and Kiyomi Dickinson (helper) for being in charge of this gathering.

In July OBWA is planning a sale of yukatas, obis, happis, and kimonos for adults and children. For more information please email Yasuko Fields at yasuko@raf.us and/or June Shiigi at shiigisj@comcast.net or phone# 503-642-2791. Also you may read Etsu Osaki's article in this newsletter about this sale.

Obon practice will begin July 17 and will continue every Tuesday and Thursday until Aug. 2nd. Everyone is welcomed to practice the Obon Odori, led by Sahomi Tachibana in the temple basement.

A donation from Kiyomi Dickinson is greatly appreciated.



### ***Kimono, yukatas sale***

***Etsu Osaki***

The Oregon Buddhist Temple Women's Association is asking for donations of kimonos, yukatas (informal cotton kimonos), obis and any other accessories. Please bring donations to the temple basement or Annex. Upon request

receipts will be given for the donations. The articles may also be on consignment

These items will be sold at various times starting on July 21, Saturday, at noon in the temple basement. After that they will be available at the Bon Odori practices on Tuesdays and Thursdays at 7 pm. Any leftover items will be donated to the omiyage (gift) shop at the Obonfest, Saturday, August 4.

This project enables us to share our kimonos and yukatas with others. All donations will go to Oregon Buddhist Temple.



### ***Dharma school news***

*Amy Peterson, DS superintendent*

#### **Dharma School General Information:**

Dharma School has ended for the current year. Although there will be no Dharma school, we will have activities for children

during Dharma Exchange.

Classes begin again in Sept. Check OBT website for schedule. Classes are taught by Dharma School volunteers. For more information and/or to register your child, please contact Amy Peterson at the Dharma school web site [dharماشchool@oregonbuddhisttemple.com](mailto:dharماشchool@oregonbuddhisttemple.com).

We are seeking volunteers! Would you like to make a difference at OBT? We have many volunteer opportunities available in the Dharma School. All OBT parents and friends are welcome, but being a parent is not required, nor is being a Dharma expert. We are specifically looking for volunteers to co-chair with our teachers on some upcoming activities. Please contact us at the Dharma school web site to volunteer.

#### **Upcoming Dharma School Programs:**

**June-July:** We are accepting donations of gently used items for the Dharma School Rummage Sale to be held July 6 and 7. Please bring your donations to the Temple Annex or coordinate pick-up of items by leaving a message at the Temple office: (503) 234-9456.

**July 6 and 7: Rummage Sale:** Fundraiser to support Dharma School. Open to the OBT community and the public. VOLUNTEERS NEEDED to help set up, sell items, and clean up. To volunteer or if you have questions, please contact Kyoko Gibbs at the Dharma school web site.

**July 15: Bowling with Sensei:** Please contact your teacher or Amy Peterson to reserve a spot. We will leave from the Temple at 11:00 AM following the Sunday service.

**July 22: Elder Visitation:** Children will leave at 11:00 am directly after service to visit some of our less mobile elders. Parents are needed to assist with driving students to the facilities. Children will visit and sing to elders.

**August 4: Obonfest:** VOLUNTEERS NEEDED to chair and/or help at the children's activity booth. To volunteer, please contact Elaine Yuzuriha at the Dharma school web site to volunteer.

**August 21-24: Day Camp:** Watch for upcoming registration information for a four-day Dharma School Day Camp, 9:00 am to 2:00 pm. Children will learn about and in some cases make foods used in Jodo Shinshu tradition and some Japanese families. Cost is \$35 per student and includes lunch and snack. Camp culminates in presentation for parents.



### ***We need everyone's help***

*Carol Saiget*

Obon is our temple's largest celebration. Thanks to the generous support of Alice Sumida, we are able to have a raffle. For a \$2 donation you get a chance to win \$500

(1st prize), \$300 (2nd prize), \$200 (3rd prize), and a lot more. For every \$10 donation, you get a bonus ticket. To insure the success of this raffle, we need everyone's help.

1. We hope every temple member will set a goal of selling at least five books of tickets.

2. If you can donate or solicit additional prizes (i.e. restaurant gift certificates, gift cards) it would be greatly appreciated.

Tickets can be picked up at the temple or contact Cathy Yarne (503) 274-1537 or [yarne@easystreet.net](mailto:yarne@easystreet.net).



### ***Food, food, food***

*Cathy Yarne*

Now that we have your attention, please read on!

• **WHAT:** The Multnomah County Food Handlers office will give a

presentation about safe FOOD HANDLING and PREPARATION.

• **WHO:** EVERYONE who is involved in any food related event at the Temple.

• **WHEN:** Saturday, July 21st @ 10:00am

This will be part of the OBWA meeting which begins @ 9:30am.

Whether you are serving or preparing food for snacks or major fundraisers like the Spring Bazaar and Obon, it's important that EVERY OBT volunteer be informed and practice safe food handling. Providing healthy, safe food should be everyone's responsibility. We hope all of you attend this presentation!



**Obonfest  
omiyage booth**  
*Brenda Fugate, Cathy  
Shikatani and Janice  
Ishii*

We are seeking donations of Asian goods, crafts, books, and other lightly used gift items to sell. Keep us in mind when you clean that closet or home, downsize your living space, or have a minute to craft gifts.

All sales benefit the temple. Please label items "Omiyage Booth" and your name (optional) and leave in temple annex beginning in July. Thanks,

### **Obon commemorative lanterns**

Obonfest will again feature Commemorative Lanterns to celebrate our Kangi-e or "Gathering of Joy". The lanterns will be hung from lines radiating from the center of the dance area. The lanterns commemorate the life of a loved one, remembering relatives, friends, or even pets regardless of when they passed away. The names of the honored ones are beautifully written in kanji, katakana and/or English with the date of passing.

If you have lanterns from last year, you can also have them hung to continue this joyful remembrance. **Order form is in this newsletter and at the temple.**

Also donations are appreciated to offset the cost. Send donations to the Oregon Buddhist Temple Commemorative Lanterns: Oregon Buddhist Temple, 3720 S.E. 34th Ave, Portland, OR 97202



**Lotus circle – July**  
*Jean Matsumoto*

Altar flowers for the month of July will be provided by generous donations made by the following families in memory of their loved

ones:

- July 1 – Ray Fields in memory of (imo) his brother, Richard
- July 8 – Mitsuko Hasuike imo husband, James; Grace Ishikawa imo father, Joe Sadaji Tachibana; and Eric Ouchida imo mother, Rose
- July 15 – Judy Murase imo husband, Robert
- July 22 – Josephine Uyeda imo parents, Kaguma and Yone Toya
- July 20 – Jayne Ichikawa imo father, Kaz Kinoshita; Lily Meiners imo parents, Frank and Mary Kurihara; and Ray Fields imo mother, Lois Mayers.

Contributions made by these people ensure that the altar is always decorated with beautiful flowers arranged by our toban ladies each week. We are truly fortunate to have such a

talented group of ladies who volunteer their time so that all of us can enjoy the arrangements. We also appreciate the efforts of Ken Garner (webmaster@oregonbuddhisttemple.com) who has set up a webpage where memories of loved ones can be shared. For information about the OBT Lotus Circle, please contact me at 503-280-2463, or jamatsumoto@gmail.com.

### **Condolences**

To the family of Mrs. Yoshiko Yasutome who passed away on May 27, 2012 in Ponte Vedra Beach, Florida where she lived with her son Kenneth. She will be remembered for her dedication to preparing the lovely flower arrangements on the altar.

### **2012 Memorial Chart**

Year Of Passing	Memorial	Year Of Passing	Memorial
2011	1 year	1996	17 year
2010	3 year	1988	25 year
2006	7 year	1980	33 year
2000	13 year	1963	50 year

*If you would like to have a memorial service performed for loved ones or ancestors, please make arrangements with Rev. Gibbs as early as possible.*

### **July Toban**

Carrollo, Teri-Ann	Dart, Chris
Dobbins, Autumn	Hollander, David
Ishikawa, Grace	Kagawa, Julie
Kodama, Misa	Lilly, Susan
Moro, Marlene	Oh-Keith, Douglas
Oh-Keith, Kathy	Osaki, Etsu
Osaki, Herb	Saiget, Carol
Wahl, Joe	Wahl, Lora
Yagi, Kan	Yagi, Micki
Yamauchi, Sandie	Yarne, Cathy

### **Garden toban**

*Jayne Ichikawa*

The OBT garden toban is hoping to have a garden clean up before the Obon Service on July 29 and August 4th OBON FEST. With so many community people attending it is important to have our Japanese garden looking beautiful and well maintained. Thanks to the people who have been



helping, but we need more volunteers. We mainly work on the garden for the Hanamatsuri, Gotanye, and Obon/Obon Fest services throughout the year. The next work party will probably be held during the last couple of weeks in July. If you are interested and available, please contact Jayne Ichikawa (email: [jayneichi@gmail.com](mailto:jayneichi@gmail.com) or phone # 503-639-0067) No experience is needed--just the enjoyment and appreciation of our Japanese Garden!



### ***New books in the library***

***Etsu Osaki***

***Path of Peace*** by Shi Wuling, Amitabha Publications, Chicago: 2006 (paperback). If you're looking for short Buddhist sayings this small book is it. It has one for

each day of the year. Here are a few examples:

- July 1: Loving others is caring as much about their happiness as your own.
- July 15: Anger is a poison, patience its antidote.
- July 22: When tempers are rising and we do not know how to speak wisely, it is best to remain silent.

***Discovering Buddhism in Everyday Life*** by Marvin Harada, Buddhist Education Center, Anaheim, CA: 2011 (paperback). This is a collection of short essays written over a period of 25 years for the Orange County Buddhist Church newsletter. Rev. Harada grew up in Ontario, OR and attended the Idaho-Oregon Buddhist Temple. He says he tried to show how Buddhism is all around us and based his essays on his everyday life experiences. There are copies for sale in the library.

***Dharma Talks*** by Craig Horton, published by the author, Stefan Padfield and Tim Averre, Cleveland, OH: 2010. "Things are not as they seem, nor are they otherwise" is the first quotation in this book of beautiful photos. Many of these thoughts must have arisen as the author sat in meditation. They seem to emphasize living in and appreciating the now.

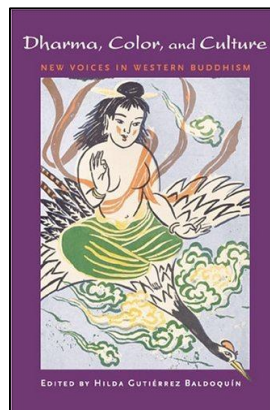


### ***Natsumatsuri July 21, 2012*** ***Volunteer help needed***

***Ken Garner***

On Saturday July 21, 2012 Yuuyake Shimibun will be hosting Natsumatsuri, a Summer festival, at the Beaverton Uwajimaya. This festival is a non-commercial, family-friendly traditional Japanese summer festival centered on culture and Japanese games, foods, music and dance. The Oregon Buddhist Temple will have a photo booth again this year. Forrest Hale has volunteered be our photographer. We need volunteers to staff the booth, ideally in 2 hour shifts. The festival runs from

12 to 8 pm and we will need volunteers for various shifts from 11:30 – 8:30. For more information and/or to volunteer please contact Ken Garner at the temple, by email at [webmaster@oregonbuddhisttemple.com](mailto:webmaster@oregonbuddhisttemple.com), or by phone 503-270-6969



### ***OBT Readers' Club*** ***Wednesday July 18, 2012 7:00*** ***- 8:30 pm***

***Dharma, Color, and Culture: New Voices in Western Buddhism*** edited by Hilda Gutierrez Baldoquin

For the first time ever, the words of Western Buddhist practitioners of color are recognized and gathered together in one groundbreaking

anthology. Alice Walker, Maxine Hong Kingston, Charles Johnson, Thich Nhat Hanh, and twenty-five other contributors share their unique perspectives on the fundamental Buddhist concepts of suffering and the path to the cessation of suffering. Together they represent the entire spectrum of Buddhist tradition.

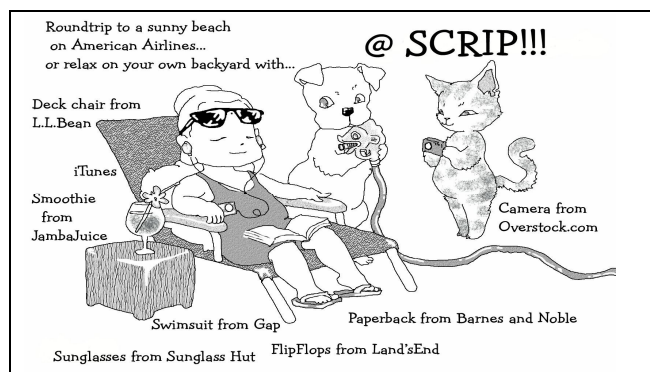
Thought-provoking and passionate, ***Dharma, Color, and Culture*** forges a new path in our understanding of the simple truths of Buddhism and their relevance for all of us. Essays by Latino, Asian, African-American, and Native American Buddhist practitioners, lay people, and Dharma teachers address the connection between diversity, racism, and Buddhism at four levels: the personal, the interpersonal, the institutional, and the cultural. Recognizing that attention to the pain of racism is essential, the overarching theme of this work is how the Dharma becomes an effective antidote to the suffering and a vehicle for healing and liberation.

We will discuss the first 3 sections of this collection during the July meeting. Join our discussion of this book (and other topics) at the next meeting of the OBT Readers' Club Wednesday July 18, 2012 from 7:00 pm - 8:30 pm. We meet at the Lucky Lab Brew Pub, located at 915 SE Hawthorne, Portland, OR. The OBT Readers' Club meets monthly on the 3rd Wednesday. All are welcome.

### ***Scrip Tip***

Did you know that Walgreens is one of the participating vendors in our Scrip program? Walgreens accepts Scrip as payment for prescriptions. At a 6% donation rate, the benefit to OBT quickly adds up. Stop by the Scrip table downstairs after service on Sunday and talk to Ken Garner. He has a full list of vendors, take orders, and gladly answer any questions

about the program you may have. New vendors are constantly being added to the program and temporary bonus periods for different vendors are announced. You may find something that interests you. You can also send an email to him at [scrip@oregonbuddhisttemple.com](mailto:scrip@oregonbuddhisttemple.com).



## Congratulations

Wynn and Traci Kiyama became first time parents with the birth of son Daniel Takezo Kiyama on June 8, 2012 at 2:40 pm and weighing 6 lbs, 13 oz.

### JSCC POSTER CONTEST



The Jodo Shinshu Correspondence Course Office is looking for a graphic designer to create an original poster for online course by September 15

\*\*\*\*\*

For project details, please contact: [JSCC@cbe-bca.org](mailto:JSCC@cbe-bca.org)

Selected designer to receive \$300.00

JSCC Office, 2140 Durant Ave.  
Berkeley, CA 94704 Tel: 510-809-1441

## OREGON BUDDHIST TEMPLE MEMBERSHIP 2012 NEW OR RENEWAL REGISTRATION

NAME \_\_\_\_\_ DATE \_\_\_\_\_

ADDRESS \_\_\_\_\_

CITY \_\_\_\_\_ STATE \_\_\_\_\_ ZIP \_\_\_\_\_ PHONE \_\_\_\_\_

E MAIL \_\_\_\_\_

### MEMBERSHIP DONATION:

INDIVIDUAL: MINIMUM \$220.00 PER INDIVIDUAL ADULT

FAMILY: MINIMUM \$440.00 PER FAMILY

SILVER: \$500.00 PER MEMBER

GOLD: \$1000.00 PER MEMBER

listed.

With silver and gold membership you receive our deep appreciation and your name will be listed in the newsletter as special donors, unless you request not to be listed.

OR YOU MAY MAKE PAYMENTS OF A MINIMUM \$20.00 PER MONTH OR A MINIMUM \$60.00 PER QUARTER

Membership allows voting privileges, a subscription to Wheel of Dharma newsletter from Buddhist Churches of America, and most importantly, demonstrates your support of the Oregon Buddhist Temple.

ENCLOSED MEMBERSHIP FEE \_\_\_\_\_

Drop off this form and a check or mail both to:

ADDITIONAL DONATION \_\_\_\_\_

TOTAL ENCLOSED \_\_\_\_\_

Oregon Buddhist Temple  
3720 SE 34th Avenue  
Portland, Oregon 97202

THANK YOU FOR YOUR SUPPORT OF THE OREGON BUDDHIST TEMPLE

## Oregon Buddhist Temple

### June 2012 Donations

**In memory of Merrie Greenwood**

Roger & Cheryl Lohman  
 Gordon & Anne Higuchi  
 Ray & Lori Fukunaga  
 Ray & Yasuko Fields  
 Karol Kennedy  
 Janice Okamoto  
 Michael & Janice Ishii  
 Shinya & Jayne Ichikawa  
 Ann Shintani & Scott Winner  
 Amy Peterson  
 Susan Endecott  
 Gerald & Joann Sumoge  
 LaRhette Swann  
 Herb & Etsu Osaki  
 (to Hishinuma Fund)

**Yoshito Sadamoto 7th yr memorial**

Setsy & Chip Larouche

**In memory of Yosh Hasuike**

Christine Iwai

**In memory of Leke Nakashimada**

Richard & Edna Koyama  
 Ruth Sono Watanabe  
 K. David Itamura

**Masuko Onishi 50th yr memorial**

Elsie & Harold Onishi

**Isamu Iwamoto 17th yr memorial**

Kimiko Iwamoto

**In memory of Kow Mukaida**

Takako Maeda

**Yenzo Iwashita, Kasuga Iwashita  
50th yr memorial**

Makoto & Kyoko Iwashita

**In memory of Phyllis Muramatsu**

Matt Muramatsu

**In memory of Frank & Mae Furukawa,  
Suetaro & Tomeka Ishida,  
Frank & Richard Furukawa**

Walter & Terry Wakabayashi Courter  
 Cindy & Joe Medina  
 Terri-Ann, Tom & Midori Corrollo  
 Wayne Wakabayashi  
 Kathi Yamamoto

**Memorial Day**

Nobuo & Takako Ishida  
 Ben & Sumie Ishida  
 Mary Hatori

**Lotus Circle**

Ruth Sono Watanabe  
 Alan Kasubuchi  
 Amy Peterson  
 Jerry Koike

**Father's birthday**

Jean Matsumoto

**Youth Activities Fund**

Connie Masuoka

**Hatsumairi - Lucas Gormley**

Alice Ando

**Obon Festival**

Alice Sumida (raffle prizes)

**Special donations**

Jean Matsumoto (Hishinuma Fund)  
 Gary Higashi  
 Laverne & Helen Sasaki  
 Philip L. Kollas  
 Nobuo & Takako Ishida  
 Hiroko Sugitani-Fish

**Hanamatsuri**

Jean Takashima  
 Alice Ando  
 June & Stan Shiigi  
 May Takemoto

**Gotan-e**

Anonymous (3)  
 Alan Kasubuchi  
 Henry & Eulia Mishima  
 Ami Kinoshita  
 Shoun & Grace Ishikawa  
 Mitsuko Hasuike  
 Richard & Kumiko Mishima  
 Nami Sasaki  
 Fumiko Okubo  
 Fumi Saito  
 Kimiko Iwamoto  
 Grace Aoki  
 Sumiko Ikata  
 May Kasahara  
 Ben & Sumie Ishida  
 Toshiko Hayashi  
 Sahomi Tachibana  
 Shizue Sugihara  
 Chiho Okita  
 Randy & Dana Kunisaki  
 Teruko Nishikawa  
 Michael & Kimberly Hanabusa  
 Misako Kodama  
 Alice Ando

**Gotan-e (continued)**

Cathlyn Yarne  
 Fusako Ouchida  
 Yoshi & Tomoko Ono  
 Shinya & Jayne Ichikawa  
 Todd & Elaine Yuzuriha  
 K. David Itamura  
 Benny & Alice Tano  
 Mary T. Okita  
 Jean Takashima  
 Alice Ando  
 Pat & Tom Hokama  
 Robert & Kathleen Matsunaga  
 Janice Okamoto  
 Chris & Susan Leedham  
 June & Stan Shiigi  
 LaRhette Swann  
 Jean Tateishi  
 Kiyomi Dickinson  
 Karol Kennedy  
 Yoshie Kagawa  
 Herb & Etsu Osaki  
 Shoun & Grace Ishikawa  
 Alice Sumida  
 Michael & Janice Ishii  
 Charles & BeeBee Dawson  
 Cindy Cohen  
 Grace & Katsuya Amasuga  
 Takako Maeda

**2012 membership donations**

Tamiyo Watari  
 Hiroko Sugitani-Fish  
 Marlene Moro

**Member pledge donations**

Jean Matsumoto  
 Chanda & Eric Stone  
 Matt & Kirstin Litchfield  
 Susan M. Lilly  
 Susan Endecott

*Acknowledgements are mailed to individuals for donations of \$250 or more, to donors not on the OBT mailing list, and to any donor upon request.*

*Please inform us of any significant errors or omissions.*

Susan Endecott

503-698-3767

[endecott@worldstar.com](mailto:endecott@worldstar.com)

**ORDER FORM FOR COMMEMORATIVE LANTERNS**

## One Order Form for Each Lantern

ObonFest at the Oregon Buddhist Temple will again feature Commemorative Lanterns to celebrate our Kangi-e or "Gathering of Joy". The lanterns will be hung from lines radiating from the center of the dance area. The WHITE lanterns (\$25) commemorate the life of a loved one, remembering relatives, friends, or even pets regardless of when they passed away. The RED lanterns (\$25) honor a living person, organization or company. The names of the honored ones are beautifully written in English and kanji/katakana. You can re-hang a previously purchased lantern to continue this joyful remembrance (\$15).

The commemorative lantern order form is also available on the OBT website:

<http://www.oregonbuddhisttemple.com/documents/events/2012/lanterns2012.pdf>

Lantern order deadline: Sunday, July 22, 2012

For additional questions, please contact Edna: email: RichKoy@juno.com

**WHITE COMMEMORATIVE LANTERN (\$25)**

Deceased's Name (English): \_\_\_\_\_

Japanese Version (kanji/katakana): \_\_\_\_\_

Date of Passing: \_\_\_\_\_

**RED COMMEMORATIVE LANTERN (\$25)**

Name (English): \_\_\_\_\_

Japanese Version (kanji/katakana): \_\_\_\_\_

**RE-HANGING PREVIOUSLY PURCHASED LANTERN (\$15)**

Name (English): \_\_\_\_\_

Japanese Version (kanji/katakana): \_\_\_\_\_

Purchaser's Name: \_\_\_\_\_

Address: \_\_\_\_\_

City: \_\_\_\_\_ State: \_\_\_\_\_ Zip: \_\_\_\_\_

Phone: \_\_\_\_\_ email: \_\_\_\_\_

orders must be received by **JULY 22, 2012**. Please make checks payable to:

**Oregon Buddhist Temple**

3720 SE 34<sup>th</sup> Ave

Portland, OR 97202

Lanterns may be picked up Sunday August 12 or August 19 at 9:30 am